

TI-420 , TP-420 , TCM-420 , TCB-420

Current transformers WITH 4 ... 20 mA OUTPUT

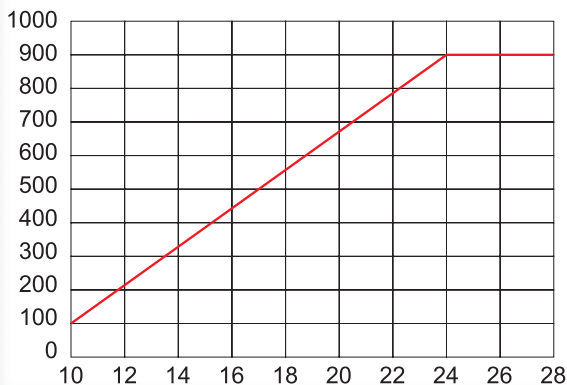
Type	TI-420			TP-420					TCM-420		TCB-420		
	35	70	105	23	58	88	812	816	25	35	35	70	105
Inner Ø	35	70	105	20 x 30	50 x 80	80 x 80	80 x 120	80 x 160	25	35	35	70	105
	79	110	146	110	145	145	185	245	87	87	79	110	146
	100	130	170	89	114	144	144	184	70	105	166	196	236
	33	33	33	58	50	50	50	70	70	70	33	33	33
Mounting													
A	TI-420			TP-420					TCM-420		TCB-420		
	35	70	105	23	58	88	812	816	25	35	35	70	105
2,5	M70811								M71041		M71011		
5	M70812			M70211					M71042		M71012		
10	M70813			M70212					M71043	M71051	M71013		
20	M70814			M70213					M71044	M71052	M71014		
50	M70815			M70214					M71045	M71053	M71015		
100	M70816	M70821		M70215	M70221	M70231			M71046	M71054	M71016	M71021	
200				M70216					M71047	M71055			
250	M70817	M70822	M70831	M70217	M70222	M70232	M70241				M71017	M71022	M71031
300										M71056			
500		M70823	M70832	M70218	M70223	M70233	M70242	M70251				M71023	M71032
750		M70824	M70833		M70224	M70234	M70243	M70252				M71024	M71033
1 000			M70834			M70235	M70244	M70253					M71034
1 500			M70835			M70236	M70245	M70254					M71035
2 000								M70255					
3 000								M70256					
4 000								M70257					

FEATURES

	TI-420	TP-420	TCM-420	TCB-420
Operating Conditions				
Class interval	0 °C / +50 °C			
Operating temperature	-10 °C / +50 °C			
Higher voltage for the material (U_m)	0,72 kV c.a.			

	TI-420	TP-420	TCM-420	TCB-420
Measurement circuit				
Primary current	According to type			
Response in lineal frequency	50...60 Hz			
Secondary current	4...20 mA d.c.			
Accuracy (between 5...110 % I_n)	$\pm 1,5 I_n$ reading			
Overloads (at ambient temperature)	1,5 I_n permanently			
Standards	IEC 44-1, UNE 21 088-1, IEC 664, VDE0110, VDE0414, UL 94, IEC 1010-1, EN 61010-1			

MAXIMUM LOAD RESISTANCE



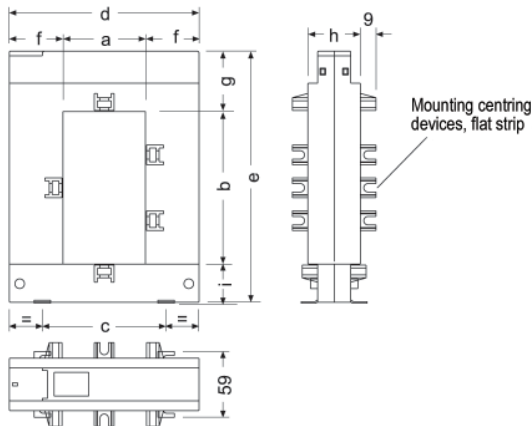
ACCESSORIES

FA-420
M79911





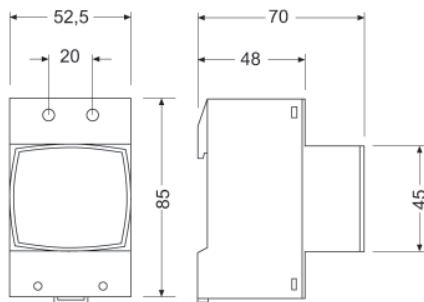
TP 23 / TP 58 / TP 88 / TP 812 / TP 816



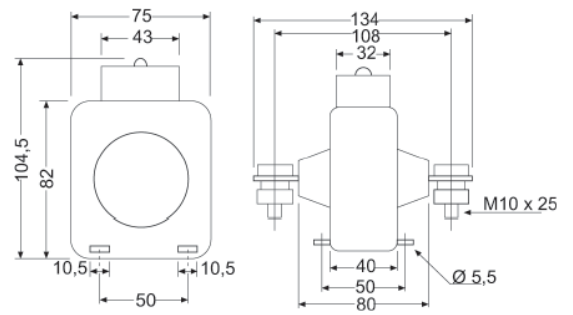
sizes in mm	TP-23	TP-58	TP-88	TP-812	TP-816
a	20	50	80	80	80
b	30	80	80	120	160
c	51	78	108	108	120
d	89	114	144	144	184
e	110	145	145	185	245
f	34	32	32	32	52
g	47	32	32	32	47
h	40	32	32	32	52
i	32	32	32	32	38

Note: All types have mounting centring devices except the TP-23

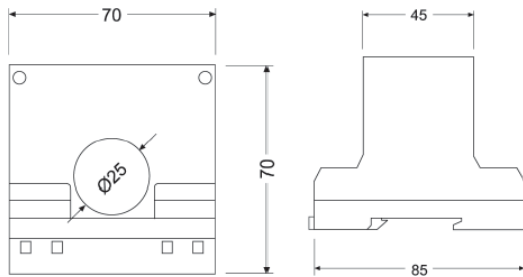
TM 45



TA 210



TW 25 / TW 25M



TI 420

sizes in mm	TI-420-35	TI-420-70	TI-420-105
a	100	130	170
b	79	110	146
c	26	32	38
d	48,5	66	94
e	35	70	105

